

33/7

# THE BRIDGEHEAD OF EAST PRUSSIA

*Edited by*  
THE POLISH RESEARCH CENTRE  
LONDON

WITH MAPS

*Published by*  
POLISH BOOKS DEPOT  
EDINBURGH  
1944

147

Price 3/-

# THE BRIDGEHEAD OF EAST PRUSSIA

EDITED BY  
THE POLISH RESEARCH CENTRE  
LONDON

WITH MAPS

PUBLISHED BY  
POLISH BOOKS DEPOT  
EDINBURGH

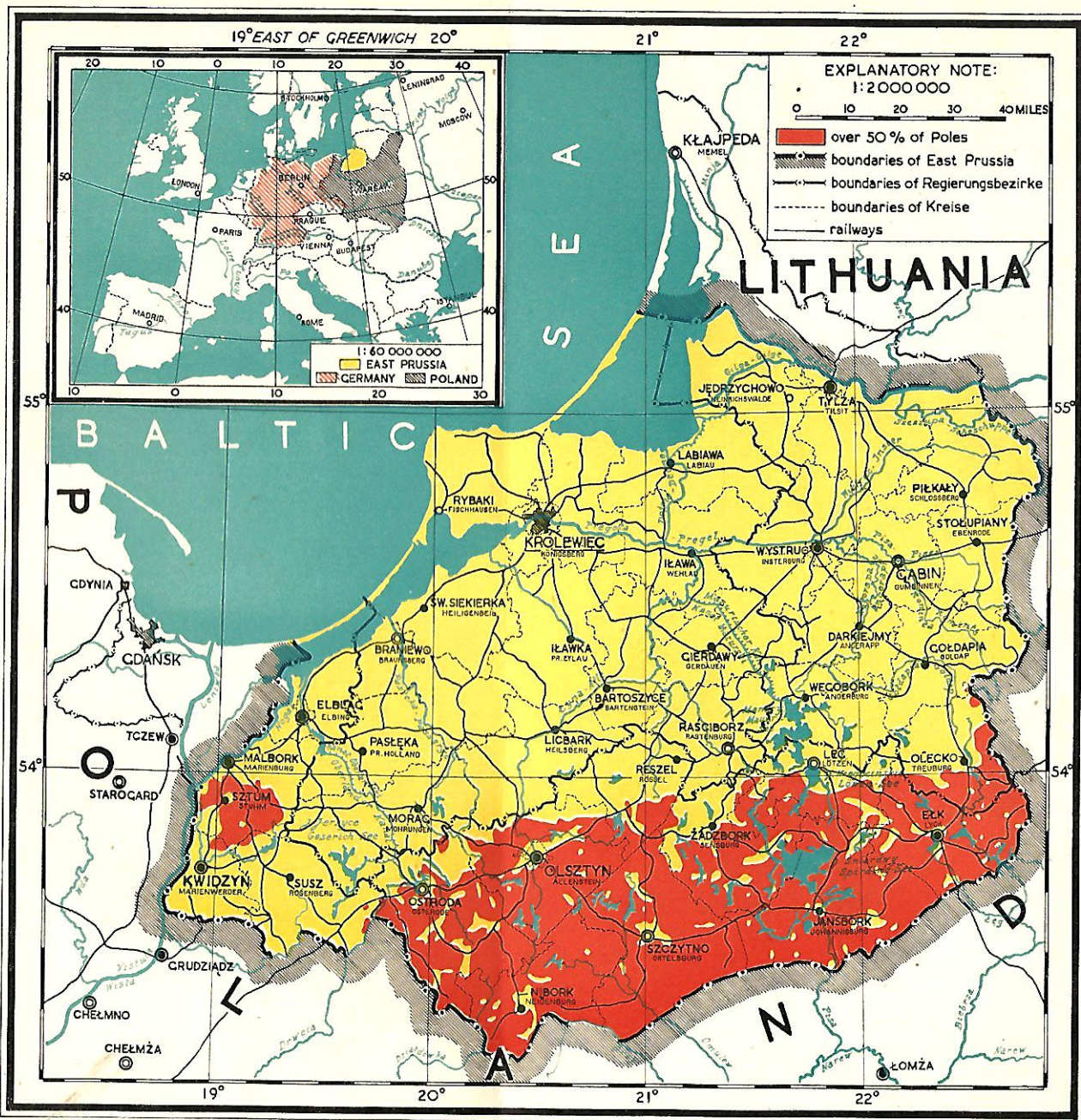
1944

## CONTENTS

	PAGE
INTRODUCTION . . . . .	3
I. PRUSSIA UNDER THE TEUTONIC ORDER . . . . .	7
II. PRUSSIA A POLISH VASSAL STATE . . . . .	14
III. THE PRUSSIAN MONARCHY . . . . .	20
IV. THE NINETEENTH CENTURY . . . . .	25
V. EAST PRUSSIA ON THE EVE OF WAR . . . . .	31
VI. THE GREAT WAR AND THE LAST PHASE . . . . .	36

DR LUDWIK GRODZICKI.

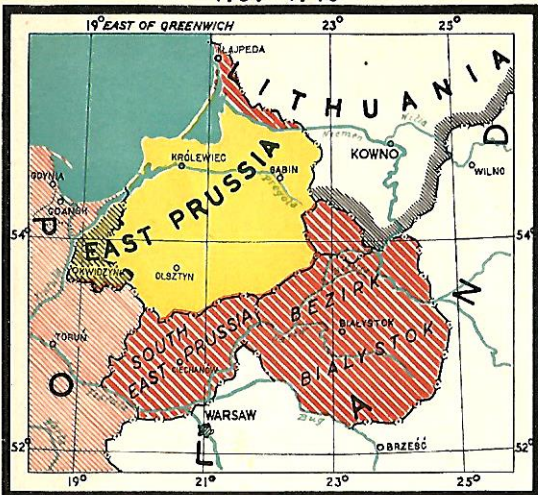
# EAST PRUSSIA



STATUS AS ON I.VII. 1938.

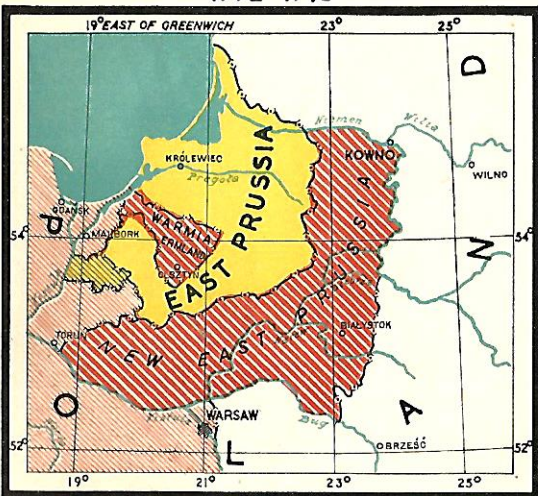
# EAST PRUSSIA

after the German aggressions  
1939-1943



STATUS AS ON 1.I.1943.

# after the Prussian aggressions 1772-1795



STATUS AS ON 1.I.1800.

EXPLANATORY NOTE:

1:8 000 000

- East Prussian territories before the aggressions
- Polish and Lithuanian territories incorporated into East Prussia or placed under its dependence
- other Polish territories incorporated into Germany or Prussia
- East Prussian territories incorporated into other Prussian or German provinces
- the frontier between Poland and Lithuania in 1938



---

THE POLISH RESEARCH CENTRE was founded in London in April 1940, and is governed by an Anglo-Polish Council. The Centre has been given hospitality by the Royal Institute of International Affairs at 32 Chesham Place, London, S.W.1

---